

DIAGRAM 7 – CROSS-SECTION (3 QUESTIONS)

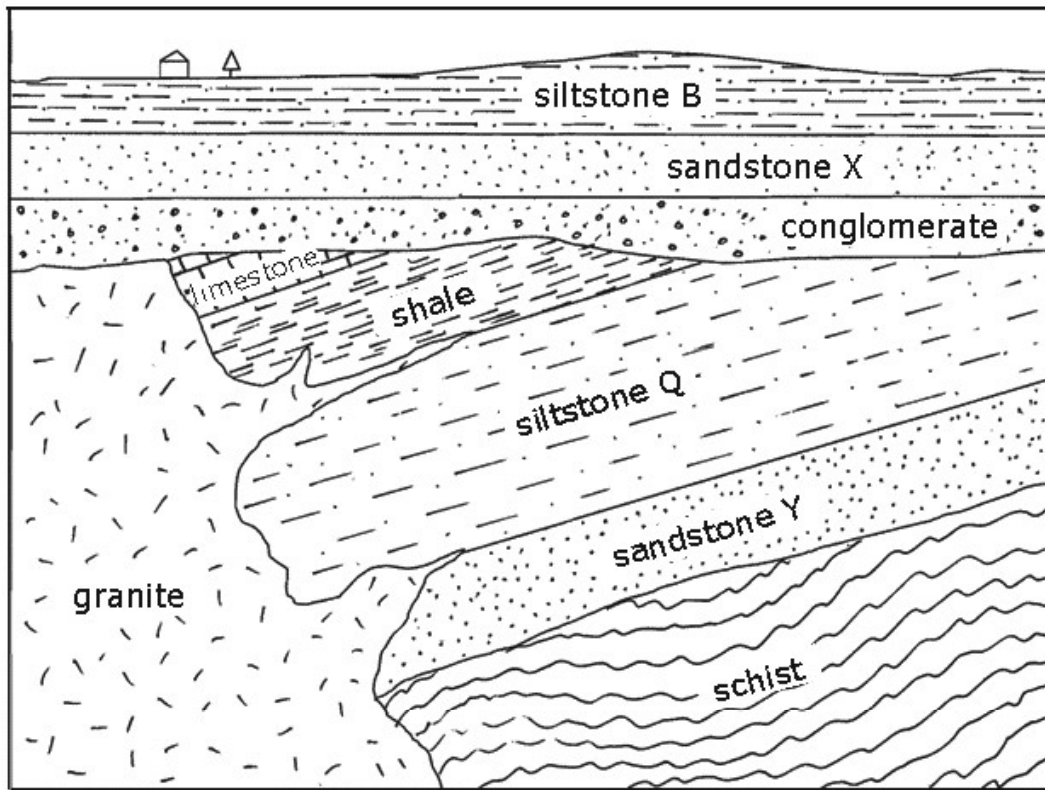


Diagram 7 shows nine rock formations and two unconformities. Beginning with the schist, the diagram represents 12 geological events, including tilting.

1. Color the two unconformities red.
2. Although the younger unconformity is one line on the cross-section, it actually consists of two different types of unconformities, which are named according to what lies beneath the line. Name each type of unconformity and describe in one or two words what lies beneath it.
 - a.
 - b.
3. What is the age relationship of the bodies of rock, the tilting, and the unconformities in the block diagram? To answer the question, number the events on the block diagram to show the relative age sequence from oldest to youngest, including the unconformities and the tilting, with 1 being the oldest. For the tilting, put the number of where it is in the sequence just outside the cross-section next to the tilted strata, with tilting written after the number.